



2021 Family Handbook

Winter Harry & Rose Samson Family JCC · 6255 N. Santa Monica Blvd. · Milwaukee, WI 53217 · 414-967-8240 · Fax 414-377-3339
Summer 7050 Old Highway 70 · Eagle River, WI 54521 · 715-479-8030 · Fax 715-479-8527 · info@campinterlaken.org · www.campinterlaken.org
Director Toni Davison Levenberg · Chair Bryan Sadoff · JCC Chairman of the Board Nancy Kennedy Barnett · President & CEO Mark Shapiro





Dear Camp Interlaken Family,

Welcome to another exciting summer at the Steve & Shari Sadek Family Camp Interlaken JCC. We are gearing up for an amazing summer with your child! The 2021 Family Handbook provides you with all the information you need for camp this summer. Whether you are new to Camp Interlaken or a seasoned pro, please be sure to read this handbook closely as there is some new information for this summer. Our goal is to create a *kehillah b'yar*, a community in the woods. Campers will be part of a *chevra*, a group of friends, who live in a vibrant community that operates according to Jewish values. I look forward to building a summer of fun and a lifetime of Jewish memories for your camper.

B'Shalom,

Toni

MISSION & VISION

Mission

Camp Interlaken JCC offers an incomparable Jewish summer experience for campers and staff located in Wisconsin's north woods. Camp fosters enduring relationships, a love of Jewish community and a connection to Israel while promoting individual growth, learning and fun.

Vision

Camp Interlaken shines with *ruach* everywhere as campers and staff enjoy a broad range of activities steeped in tradition. The camp has well-maintained buildings and new energy-efficient structures surrounded by the natural beauty of the Wisconsin north woods. Campers from diverse geographic regions fill the camp to capacity.

Camp Interlaken is known for providing a nurturing environment where special attention is given to individual needs, building self-confidence and modeling Jewish community leadership through solid programming. Active alumni stay connected to camp and rally with the community to financially support camp enabling scholarships for Jewish children who are in need and allowing for recruitment, training and retention of high quality staff.

IMPORTANT DATES

Virtual New Camper Meeting	May 19 7pm Central Time
All Forms Due	May 1
CampMeds 1 st Session Deadline	May 22
Camp Meds 2 nd Session Deadline	June 21
Session 1	Tues., June 22 – Sun., July 18
Mini Session 1	Tues., June 22 – Tues., July 6
Session 2	Wed., July 21 – Mon., Aug 16
Mini Session 2	Wed., July 21 – Wed., Aug 4
Ozrim	Tues., June 22– Mon., Aug 16
Family Camp	Postponed until 2022

Payment in full is due by April 1. If you have applied for a payment plan option, full payment is due by June 1. Payment arrangements can be made by calling Edith Riesz, Accounting Staff at (414) 967-8245 or eriesz@jccmilwaukee.org

A \$100 late fee will be assessed if forms are not returned by May 1st.
If you register after the due date, forms are due 10 days from the date of registration.



Find us on
Facebook



Follow us on
Instagram



FIND US ON
TikTok

YouTube
LIKE AND SUBSCRIBE

OUR PROFESSIONAL STAFF



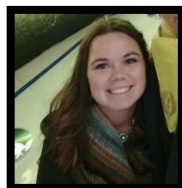
Toni Davison Levenberg Director

Toni joined the Interlaken team in January 2006. Originally from Philadelphia, PA, she has actively been involved in camping and informal Jewish education since she was a camper at JCC Camp Arthur-Reeta. Toni has a Bachelor of Science degree in Business Administration from the University of Florida and a Master of Arts in Jewish Professional Studies from the the Spterus Institute of Jewish Learning and Leadership. Prior to working at Camp Interlaken, Toni was the Assistant Director of House in the Wood Camp serving inner-city Chicago children, the Sales & Operations Manager of Camp CHI's Perlstein Resort & Conference Center, and a Software Engineer with two major technology consulting firms. In 2007, Toni was selected as one of 12 resident camp directors to be a Mandel Senior Fellow in the Lekhu Lakhem program through the JCC Association's Mandel Center for Jewish Education. Also, Toni graduation from the Foundation for Jewish Camp's prestigious Executive Leadership Institute in 2019. Toni has been active with the Wisconsin and Illinois sections of the American Camp Association and with the Midwest Jewish Camp Directors. She has been on the board of the National Council of Jewish Women – Milwaukee Chapter and currently serves as a member of the Women's Philanthropy Board for the Milwaukee Jewish Federation. Toni is an avid public speaker who has delivered training and talks as a part of the Professional Development team at the JCC in Milwaukee as well as Gan Ami Early Childhood, American Camp Association, and Foundation for Jewish Camp. Toni lives in Milwaukee, Wisconsin with her husband Jonah and her children Jaron (9) and Nava (6). Toni is looking forward to her 16th summer at Camp Interlaken.



Tova Blasberg Program Director

Tova is an Interlaken lifer, and she is so excited to be HOME as a part of the full-time team! This is Tova's 3rd summer as Program Director and her 19th summer at Camp. Tova spent 16 summers at Camp Interlaken as a camper, counselor, ozo, unit leader for almost every unit in Camp, and Mama Ozo in the summer of 2015. Tova received a BS in Recreation, Parks and Tourism with minors in Leadership and Non-Profit Management from the University of Florida (Go Gators). Before that, Tova worked for Disney as a Disney College Program participant for one year full time and two more years seasonally. Prior to moving back to Milwaukee, Tova was the Summer Camp and After School Director at Sun Country Sports Center in Gainesville, Florida.



Nicole Hanlon Camping Services Coordinator

Nicole joined the Interlaken team in 2019 as the Camping Services Coordinator. She is the first person you talk to about all things Camp. From camper registration and introducing new campers to Interlaken to summer transportation and office administration throughout the year. You can expect to see Nicole around the Milwaukee JCC as well as at bus departures and at airport arrivals. Nicole earned a BS degree from Aurora University with cum laude honors, majoring in art and minoring in sociology. She has a background in business, community outreach, youth programming, and education. Nicole was involved as a camper, counselor, and leadership at Camp WOW for 10 years. She is also an avid volunteer and is a member of our Tikkun Olam Volunteer (TOV) committee. While her first summer with camp was unforgettable in 2020, Nicole can't wait to spend her first summer at camp actually in the Northwoods.



Michelle Lafferty Social Worker

Michelle has been a part of the Interlaken family since 2004. Michelle has been involved in Jewish camping since she was a camper at an overnight camp in Dingmans Ferry, PA. Michelle received her MSW from California State University- Long Beach and is a licensed clinical social worker. Michelle has practiced clinical social work in various positions from LA County Probation to Director of a residential facility in Miami, FL. Michelle has been involved with the JCC since she moved to Milwaukee in 2000. First, as a mom with a 3 year old looking for a place to connect with other moms and their children, then as a JCC room parent/volunteer, to working as Interfaith Outreach Coordinator, Family and Children Administrator and Camp Social Worker. Michelle currently provides training and technical assistance to the Gan Ami Preschool on promoting social and emotional competence in young children.



HOW TO CONTACT US

Winter – until June 1st

Harry & Rose Samson Family
Jewish Community Center
6255 N. Santa Monica Blvd.
Milwaukee, WI 53217
(414) 967-8240
(414) 377-3339 fax

Summer – Starting June 1st

Steve & Shari Sadek Family
Camp Interlaken JCC
7050 Old Highway 70
Eagle River, WI 54521
(715) 479-8030
(715) 479-8527 fax

Director

Toni Davison Levenberg

tdavison@jccmilwaukee.org
calendly.com/tonidavison

Program Director

Tova Blasberg

tblasberg@jccmilwaukee.org
calendly.com/tovablasberg

Camping Services Coordinator

Nicole Hanlon

nhanlon@jccmilwaukee.org
calendly.com/nicolehanlon

Social Worker

Michelle Lafferty

mlafferty@jccmilwaukee.org



CAMP FORMS

We are happy to continue our online forms this year! To access your camper's forms, please log in to your camper's secure account here: <https://interlaken.campintouch.com>. This brings you to the forms that you must fill out for each camper. Please call Nicole Hanlon with questions at 414-967-8240. The data you provide gives us necessary information to best serve your child. Each form is reviewed by the appropriate staff with concerns for that area of your child's care. All information is kept confidential and is seen only on a need to know basis.



Find us on
Facebook



Follow us on
Instagram



FIND US ON
TikTok



LIKE AND SUBSCRIBE
YouTube

AMERICAN CAMP ASSOCIATION ACCREDITED

ACA Accreditation means that Camp Interlaken JCC cares enough to undergo a thorough (up to 500 standards) review of its operation — from staff qualifications and training to emergency management. American Camp Association collaborates with experts from the American Academy of Pediatrics, the American Red Cross, and other youth-serving agencies to assure that current practices at your child’s camp reflect the most up-to-date, research-based standards in camp operation. Camps and ACA form a partnership that promotes growth and fun in an environment committed to safety.

ACA helps Camp Interlaken JCC provide:

- Healthy, developmentally-appropriate activities and learning experiences
- Discovery through experiential education
- Caring, competent role models
- Service to the community and the environment
- Opportunities for leadership and personal growth



VISITING CAMP

Visitors will not be permitted at Camp in the Summer of 2021

A TYPICAL DAY AT CAMP INTERLAKEN

*This schedule reflects a non-Covid-19 summer experience at Camp. The schedule for 2021 will look a bit different based on mitigating risk and minimizing spread of Covid-19.

7:00am	Rise & Shine	1:30pm	Menucha (Rest Hour)
7:30am	Boker Tov! (Good Morning!)	2:30pm	Chug Daled (4 th Activity)
7:50am	Toranim (Table Setters)	3:30pm	Chug Hay (5 th Activity)
8:00am	Hanafat Hadegel (Flag Raising)	4:30pm	Nosh & Chofesh
8:10am	Aruchat Boker (Breakfast)	5:30pm	Personal Nikayon (Showers)
9:00am	Nikayon (Cleanup)	6:00pm	Horadat Hadegel (Flag Lowering)
9:30am	Chug Aleph (1 st Activity)	6:30pm	Aruchat Erev (Dinner)
10:30am	Chug Bet (2 nd Activity/Cabin Time)	7:30pm	Peulat Erev (Evening Program)
11:30am	Chug Gimmel (3 rd Activity)	9:00pm	Rod Hayom
12:30pm	Aruchat Tzohoryim (Lunch)	9:15pm	Lailah Tov

Friday’s schedule is different as we prepare for Shabbat. All activities take place in the morning and Shabbat preparation (cabin, camp, personal *Nikayon*, and cabin time) is in the afternoon. Saturday (Shabbat) has a more open and relaxed activity schedule that includes *Tefillah* (Services), *Z’Sichot* (discussion groups) and open activities. Shabbat ends Saturday evening with *Havdallah* services.



Find us on
Facebook



Follow us on
Instagram



FIND US ON
TikTok



YouTube
LIKE AND SUBSCRIBE



The following pages (6-9) cover Camp's policies regarding several topics; Internet, Code of Conduct, Inclusion, Bullying, and Physical Relationships. Please review these policies with your camper as failure to comply may result in dismissal from Camp per discretion of the Camp Director.

INTERNET POLICY

1. Our camp views social networking sites and other Internet communication as a positive way for you to keep in touch with your friends and express yourself. As a camper at our camp, you have the right to exchange e-mails or DMs with other campers and invite other campers to be on your "friends" list in any way that you and your parents see fit.
2. Please do not use the official camp name or logo on personal pages, profiles, or websites or create a group with any of the above listed things. Also, please do not add a link to the official camp website from any of your pages.
3. Concerning e-mails, DMs and comments you might make to other campers on their social networking site (like [Facebook](#), [Twitter](#), [Pinterest](#), [Youtube](#), [Instagram](#), [Snapchat](#), or [TikTok](#)), we ask that you:
 - a) Keep them positive and respectful of staff, campers and camp alike;
 - b) Not use obscenities, vulgar or sexual language;
 - c) Not say mean or threatening things to or about other campers, staff, or camp;
 - d) Not pose as another camper online and use that false screen name, blog or website to spread false information about anyone or say damaging, disparaging, or threatening things about anyone or camp;
 - e) Not use a website or blog or e-mail to talk about things that are against camp policy, like drugs or alcohol or bullying or sexual things.
4. It is our policy to call the parents of campers who send negative messages to other campers or represent themselves negatively in public social media forums and share the content of those messages with parents.
5. If you receive a threatening e-mail, DM or message on your personal website or directly to your email – one that is mocking, uses vulgar or harassing language – here is what you should do:
 - a) Do not respond to the message or retaliate, because it might encourage the sender or get you into trouble.
 - b) If possible, record the message. Take a screenshot or download it to your hard drive.
 - c) Print out a copy of the message, then close it but do not delete it.
 - d) Tell your parents about it and, if necessary, have them notify the authorities or other parents of involved campers.
 - e) If you suspect that the sender is from camp, please inform us.
 - f) You or your parents can also contact an organization such as Pedowatch (www.pedowatch.com) or the National Center for Missing and Exploited Children (www.nemec.org).
6. Communication initiated by campers to staff on social media websites is permissible. Camp Interlaken's policy states that staff must have camper "friends" on a "limited profile" setting thereby blocking campers from staff members' personal content.
7. Once I identify myself in any way with Camp Interlaken, the general public will see me as an ambassador or spokesperson for Camp Interlaken.
8. Any camper who violates any of our policies regarding the Internet or other communication may be asked to leave camp or might not be eligible to return to camp.



CODE OF CONDUCT

All standards of behavior at Camp Interlaken are grounded in Jewish values. They are designed to create an “envelope of safety” within which children and teens can grow and have fun in a relaxed, non-threatening environment. Our goal is to create a *kehillah b'yar*, a Community in the Woods. We want campers to be part of a *chevra*, a group of friends, who live in a vibrant community that operates according to Jewish values. Campers who do not follow the rules set in the Code of Conduct or the Covid-19 Playbook may be sent home early from camp per discretion of the camp director. No refund shall be given if a camper is asked to leave camp early due to behavior.

B'TZELEM ELOHIM

צלם אלוהים

We are all created *B'tzelem Elohim*, in the image of G-d. We therefore deserve to be cared for as a precious and holy being. We are all fundamentally equal in value and rights. We each have a responsibility to conduct our lives in a manner that reflects well on our Creator. Therefore at camp:

- No member of the camp community is permitted to possess or use cigarettes, e-cigarettes, tobacco, vapes of any type, alcohol, or illicit/illegal drugs on camp property in any situation. Campers will be sent home from camp for smoking, vaping, drinking, or possession.
- We take care of our physical selves. This includes showering regularly and practicing good personal hygiene.
- Before acting, we check to make sure that we are respecting the feelings, safety and personal integrity of others and ourselves.
- We don't participate in unsupervised raiding or late night pranks out of the cabin without a counselor.
- We dress and behave with modesty and decorum, avoiding clothing that is revealing or exhibits slogans promoting drug use or other inappropriate behavior.
- We do not engage in either ear or body piercing or tattooing. We do not shave heads or otherwise alter the appearance of ourselves, other campers, or staff.

TIKKUN OLAM

תקון עולם

Repair of the world is central to Jewish teaching. We are in this world as partners with G-d. Our responsibility in the partnership is to take care of the world and to fix those things that we find in disrepair. Therefore at camp:

- We recognize our obligation to do *tzedakah*, to do the righteous thing.
- We protect and enhance the environment by being *shomrei adamah*, guardians of the earth and observing the principle of *bal taschit*, a prohibition against waste or destruction. We recognize that everyone is responsible for taking care of the physical facilities and the natural environment at camp.

KEHILLAH

קהילה

Creating a Jewish community is the way in which Judaism is lived. Therefore, it is central to camp. Our theme is *Kehillah b'yar*, Community in the Woods. Not even Moses Rabbenu could bear the weight of all communal responsibilities, and so we recognize that we all have to do our part to make the camp community work. Therefore, we follow the Talmudic principle, *al tifrosh min hatzibur*: You shall not separate yourself from the community.

- Campers shall respect the Bullying Policy set forth by camp (see page 8)
- Campers shall abide by the parameters set forth in the acronym “CHAKWACO” (see page 8)
- Include others in your group.
- Respect other people's property.
- Campers shall respect Camp's daily schedule and arrive on time for all programs, activities and meals.
- Avoid pranks which might be harmful to any individual's feelings or property.
- Observe the Jewish value of *lashon hara*, the principle that says we are not to gossip or spread malicious slander about each other.
- Avoid engaging in physical violence of any kind with campers or staff.

LAND OF ISRAEL

ארץ ישראל

We have a special relationship with *Eretz Y'israel*, the land of Israel, and with *Am Y'israel*, the people Israel, Jewish people everywhere. Jewish law, tradition, lore, and behavior throughout the ages and across the continents have emphasized the centrality of the Land of Israel and the Covenant between G-d and the people Israel, as well as the responsibility of the House of Israel for each other's welfare, *kol Y'israel aravim zeh b'zeh*. Therefore:

- We observe the laws of *kashrut* so that all members of our community will be comfortable. No food can come into the camp other than under the supervision of our *mashgiach*.
- We participate in the celebration of Shabbat.
- We let Jewish laws and values guide our actions.



Find us on
Facebook



Follow us on
Instagram



FIND US ON
TikTok



LIKE AND SUBSCRIBE

ONE BIG CIRCLE: EVERYBODY IN IT

Camp Interlaken is proud of our open, supportive, and inclusive environment. We are committed to building a vibrant community rooted in Jewish values and bringing the transformative power of Jewish summer camp to every child and family that comes through our gates.

We are firmly committed to promoting diversity, equity, inclusion, racial justice, anti-racism, and belonging. We take a firm stance against racism, sexism, and all acts of discrimination. We know the importance of speaking out and not standing by when we see injustice. We say “Never Again” so that we never forget the horror that the Jewish people have faced; we extend that same promise to all who struggle to gain respect, empathy, and understanding. Our Jewish values inspire us to stand up against persecution in all forms, and we are moved to act in support of our entire camp community - campers, their families, and camp staff - to ensure camp is a safe space. At camp, all campers, staff, and families have the right to feel a sense of belonging, safety, and love.

Camp Interlaken promises to spend our summers helping children grow, make memories, and build lifelong friendships. We believe that change begins through education, being a part of a community where these values are passed down from generation to generation, *l'dor v'dor*, with an everlasting goal of creating a more just and equitable community and society.

Camp is a place of wonder, exploring, newfound friendships, and gaining independence and confidence. We are a community of kindness and inclusion; we want everyone to feel safe and know that they belong at Camp. This includes campers and staff from groups who have historically faced oppression and trauma: Black people, Indigenous people, LGBTQIA+ individuals, people with neurodiversity, and all others.

Children are our future, and camp has a part in shaping the lives of our future leaders. We believe that committing to a stance of anti-racism, anti-discrimination, and acceptance will send a ripple effect from each camper back to their homes where they will help their communities develop a greater sense of purpose, identity, and human responsibility.

We welcome children and adults to engage in a process of learning. As a community, we remain committed to educating ourselves, empathizing with people whose circumstances and identities are different from our own, and doing better to improve the lives of all. We hope to help facilitate courageous conversations that raise up the values of our community and denounce all forms of discrimination at camp and beyond. Camp Interlaken is a uniquely transformative opportunity for young people to take risks and grow, and our job at Camp Interlaken is to nurture that growth.



BULLYING

Bullying is unwanted, aggressive behavior among school aged children that involves a real or perceived power imbalance. The behavior is repeated, or has the potential to be repeated, over time. Both kids who are bullied and who bully others may have serious, lasting problems.

In order to be considered bullying, the behavior must be aggressive and include:

- An Imbalance of Power: Kids who bully use their power—such as physical strength, access to embarrassing information, or popularity—to control or harm others. Power imbalances can change over time and in different situations, even if they involve the same people.
- Repetition: Bullying behaviors happen more than once or have the potential to happen more than once.

There are three types of bullying: verbal, physical and social. Bullying includes actions such as making threats, spreading rumors, attacking someone physically or verbally, and excluding someone from a group on purpose. Bullying can also occur online: through emails, text messages, Snapchat, Instagram, Facebook, instant messaging and more. This type of bullying can also lead to persons being hurt between the camp seasons.

At Camp Interlaken, bullying and harassment are inexcusable, and we stand firmly against all types of bullying. Our Camp philosophy is to ensure that every camper learns the value of cooperative living, gains a sense of Jewish identity, spirit and pride, experiences the thrill of mastering new skills, and finds the fulfillment of attaining individual goals. We work together as a team to guarantee that campers gain self-confidence, make new friends, feel safe, and go home with great memories.

Unfortunately, persons who are bullied may not have the same potential to get the most out of their camp experience. Our leadership addresses all incidents of bullying seriously and trains staff to promote communication with their staff and their campers so both staff and campers will be comfortable alerting us to any problems during their camp experience and between summers. Every person (campers, staff, and ozrim) has the right to expect to have the best possible experience at camp, and by working together as a team to identify and manage bullying, we can help ensure that all campers, staff, and ozrim have a great summer at Camp Interlaken.

We expect campers to commit to treating each other with respect (*kavod* - דבּוּר) and eliminate bullying in our community. Failure to do so may result in discipline and/or being sent home from camp at the discretion of the Camp Director. In the event that a camper is sent home, no refund will be given.

HOW CAMP INTERLAKEN HANDLES PHYSICAL RELATIONSHIPS

Our Philosophy

Camp Interlaken is a place for campers to grow, learn, explore their own capabilities, and create relationships with others. However, Camp Interlaken is not a place to be sexually active, regardless of what is done outside of camp. We want campers to have a break from the sexual pressures they are exposed to through movies, school, TV, music, the internet, and advertisements. We give them a chance to be kids and teens in a way that is responsible, but not prematurely adult. Most kids are relieved to be given this clear and enforceable limit. Teen campers (7th - 11th grades) will be told that the limit on their behavior is “consensual hugging and kissing with all clothes on,” which we call “CHAKWACO.” Campers will understand that by behaving in a way outside of “CHAKWACO,” may result in discipline and/or being sent home.

Relationships between campers

We teach all campers to respect each other in the way they talk to each other and the way they talk about each other. In 7th grade, Sha’ar (8th & 9th grades) & K’far Noar (10th & 11th grades), campers are taught the “CHAKWACO” limitation of behavior as explained above. We do not tolerate children harassing each other with sexual innuendo, put-downs or unwanted come-ons. We want to promote caring and nurturing between individual campers, while maintaining a focus on building the group.

We expect campers to commit to the boundaries set by the “CHAKWACO” acronym. Failure to do so may result in discipline and/or being sent home from camp at the discretion of the Camp Director. In the event that a camper is sent home, no refund will be given.



Find us on
Facebook



Follow us on
Instagram



FIND US ON
TikTok



LIKE AND SUBSCRIBE

SUPPORT OF CAMP INTERLAKEN

Honoring Staff

It is a long-established policy of both Camp Interlaken JCC and the American Camp Association to discourage tipping or gift giving to individual members of the staff. If you wish to show your appreciation, we will accept donations to the Camp Scholarship Fund made in honor of a particular staff member. Additionally, you can sponsor an event or donate to the Staff Recreation fund that helps plan fun, social programs for the staff during their off time. All donations are greatly appreciated and are of benefit to the total camp program. You can make a donation in the online forms that you're returning to camp via the CampMinder registration database. The contribution to the Staff Recreation Fund will show on your statement as Staff Appreciation Fund.

Support of Camp and Camp Programs

Camp Interlaken JCC depends upon the generosity of families like yours. Please volunteer to help with camp projects during the year. We invite you to open your home and invite others to hear about camp at a parlor meeting with the Camp Staff. Do you have a professional expertise you can bring to camp as a doctor, nurse, psychologist, or social worker? Would you like to be an artist-in-residence at camp? You can provide funding for a special facility or program at camp. All these forms of assistance are needed and greatly appreciated. Contact the Camp Director for more information.

We thank the generous families who support Camp and the future of Judaism with the following endowment funds:

*Elaine & William Appel • Camp Interlaken Music Program • Neiland & Amelia Vish Cohen • Ateret Cohn Scholar-in-Residence
Harry Dizack JCC Camp Interlaken Scholarship • Dorf Family Camp Interlaken Avodah • Karen Edelstein Memorial
Alan I. and Sanford J. Ettinger • Brenda Friedman Ulam and Theater Building • Friends of Camp Interlaken
Brittney Gigl Camper Assistance • Mildred Roth Goldberg • Linda Hay CIL Family Camp • Betty & Paul Jacobs K'far Noar
Eli & Helen Keller • Kennedy Barnett Family Camp Interlaken • Kids 4 Kids @ Camp JCC Scholarship
David Jonathon Kohl Camp Interlaken Scholarship • Steven Kupferman Camp Interlaken Scholarship
MacKenzie Wagan CIL Staff Scholarship • Alan & Rita Marcuvitz Family Camp Interlaken
Dr. Ronald & Fran Meyers Family Camp Interlaken Facility • Lorraine & Morry Mitz Family Interlaken Chadar Ochel
Cheryl & Mitch Moser Camp Interlaken • Phi Delta Epsilon • Plavnick Family Camp Interlaken • Anne Primakow
Horace J. & Idabelle Rosen Children's Camp Scholarship • Rubin Family Camp Interlaken Scholarship
"Bubbe" Jean Rubin Camp Interlaken Canteen • Steve & Shari Sadek Family Camp Interlaken JCC
Schuminsky Family Camp Interlaken JCC Scholarship • Jeffrey Sehler • Faye Greenberg Sigman Family Camp Interlaken Scholarship
Adam (AJ) Sobel Camp Interlaken Scholarship • Tracy Sweet Camp Interlaken JCC Scholarship • Wagan Family CIL Camper Scholarship
Dr. Alanz'l & Roz Wagner Family Camp Interlaken Medical Needs • Aaron & Gertrude Weiss Scholarship
Bob & Jean Zarne • James & Eve Joan Zucker*

To add your family name to this list and make a lasting gift to Camp Interlaken, please contact
Elyse Cohn, Chief Development Officer at (414) 967-8188 or ecohn@jccmilwaukee.org



MEDICAL INFORMATION

Health Center

While we expect most campers will stay healthy throughout the summer, occasionally campers become ill or injured at camp. We have a professionally staffed medical center and a satellite triage center for bumps, bruises and scrapes. A licensed physician and/or multiple registered nurses are in residence at camp at all times. Eagle River Memorial Hospital, Howard Young Medical Center, and additional medical and dental services are available in nearby Eagle River and Minocqua.

Parents will be notified if an overnight stay in the camp health center is required for your child. Should any significant accident or illness occur, the camp physician or nurse will notify the parent. If a prescription drug is deemed necessary, you will be notified by phone. In addition to a copy of your medical insurance card, you should also include a copy of your prescription drug card. If local non-emergency medical services are required, you will be notified and the provider or Camp Interlaken will bill you for these services. At times campers may feel run down, have a sore throat, or develop a cold. They often stop in for some over the counter treatments. Camp will not notify parents of these visits.

Please refer to the Covid-19 Playbook for Summer 2021 procedures: <https://campinterlaken.org/summer-2021-plans/>

Glasses, Braces, Inhalers, etc...

If glasses are worn by the camper, we advise you to send along a spare pair and a copy of the lens prescription. It is also advisable that a dental examination and any needed dental work be completed before camp begins. If necessary, minor dental repair (i.e., loose wire on a brace) will be taken care of by a local health professional and charged to the parents. Additionally, if your child uses an inhaler, we recommend that you send two: one for your camper to keep and another for the infirmary.

Camper Mental Health

Some parents hesitate to provide camp with personal information about their child's behavior or past experience. Some fear the information will be used inappropriately while others are concerned about their child being labeled or treated differently. All parents want to see their child have a fresh start at camp. While we fully understand these concerns, we know how invaluable such information can be in assisting us to help make your child's adjustment to camp as smooth as possible – something we know all parents want. Knowing about a learning difficulty, ADHD, bedwetting problem, a recent loss or major change in the family or child's life, etc. makes a tremendous difference in helping us to be sensitive to your child's needs. This information will be handled confidentially and shared only on a "need to know" basis.

CampMeds, Inc.

While our health center is a top facility staffed by a terrific team of healthcare personnel, we have found a dramatic rise in the number of campers on medication. With this increase of medication being dispensed at camp, we face the issue of finding the safest, most efficient way to dispense the meds. We consulted with other JCC camps as well as other Midwest camps. After examining a number of alternatives, we found that pre-packaging medications is the best possible solution. CampMeds provides a convenient service that dispenses, packages, and ships medications directly to overnight camps in the U.S. CampMeds has been packaging medications for the camping industry since 2003, and Camp Interlaken has been working with them for several of the years that they have been in business. This pre-packaging program is in compliance with all state regulations regarding medication packaging for summer camps.



Our policy and procedure for dispensing and administering medication **requires** camp families to have all of your child's medication dispensed, pre-packaged and sent to camp prior to their arrival. This includes all pills taken daily, (prescription and non-prescription) and vitamins. **If you send medications or vitamins that could be provided by CampMeds, there will be a \$150 handling and distribution fee assessed by Camp Interlaken.** Camp Interlaken stocks most over the counter items such as Tylenol, Advil, Benadryl, etc. Medications that are in pill form are individually packaged and sealed according to date and time of administration. Each individual packet may contain one or more pills prescribed to be given at the same time. This method of dispensing medicine during summer camp will minimize potential med errors ensuring that every camper gets the correct medication and dosage, at the right time, on the right day. Our nurses will now have more time to devote to your child's other healthcare needs. Families must register at www.campmeds.com to start the process of getting your child's medication prepared for the summer.

The program is so important to Camp that we have taken on the fees for CampMeds. For our families, participation in CampMeds is **FREE**, and we expect **100% participation** from families. You are only charged for the cost of the medications. Failure to participate will result in a \$150 fee from Camp.

1st Session Deadline: May 22

2nd Session Deadline: June 21



Find us on
Facebook



Follow us on
Instagram

11



FIND US ON
TikTok



LIKE AND SUBSCRIBE
YouTube

LUGGAGE & LABELS

Packing for Camp

Each camper may bring two luggage items. This may consist of one cargo bag and one duffel bag or two duffel bags. Please do not over-pack since space to unpack and store luggage in each cabin is limited. Weather can be extremely variable at camp. Typical summer weather at camp will be in the 80s during the day and in the high 40s/low 50s at night. Warm clothing and rainwear are essential. A full packing list is available on page 13.

Labeling

All clothing, personal items, and camping equipment **must be clearly marked with the camper's full name**. If using name tapes, sew/iron them securely where they may be seen. If stamping or marking with indelible laundry ink, make sure it's legible. Many campers bring similar items. Unmarked items that are lost are less likely to find their way back to their owner. Campers must assume responsibility for the proper care of personal belongings. Camp bears no responsibility for lost items. Camp maintains a lost and found and will make every effort to return items in the lost and found. **If we can identify the owner**, we will make every effort to get the item back to you. Items not labeled will be donated or used by camp. **PLEASE LABEL EVERYTHING!** Camp Interlaken is proud to partner with [LabelDaddy](#) as a resource for clothing labels. Parents using this link will receive a 10% discount on their order. Sharpies also are effective for labeling as well.

How Much To Pack

Campers do not need to pack enough changes of clothing for their entire camp stay. Laundry services are provided by the camp and are included in the camp fee. 2-week campers will receive laundry service once and 4-week campers will receive laundry service 3 times. Laundry bags should be clearly labeled in large letters on the outside of the bag. Laundry will be done by a local laundry service. Please realize that this service is a quantity laundry service doing thousands of pounds of clothing. It is not a delicate service. Camp takes no responsibility for clothing that shrinks, discolors, or is lost in the process.

What to Leave At Home

Many campers wish to bring certain items to camp that are unnecessary and inappropriate.

Please **DO NOT** bring to camp:

- Technology (See page 13)
- Items of high value such as watches, jewelry, and expensive cameras.
- Clothing that is delicate, new, or valuable. Please do not pack sexy or revealing clothing or clothing with slogans or pictures advocating use of cigarettes, nicotine, alcohol, or drugs.
- Matches, lighters, fireworks of any kind.
- Tobacco products, vapes, alcoholic beverages, controlled substances, or over-the-counter medications.
- Guns and weapons of any kind are not allowed in camp.
- Animals are not permitted on camp property unless approved by the director
- Hammocks
- Money
- Food



TECHNOLOGY AT CAMP

Camp Interlaken is proud to be Screen Free! This transition to Camp may be difficult for campers whose lives are dominated by personal technology and information overload. Below are some reasons that Camp Interlaken is a Screen Free environment:

- Encourage our campers to spend more time enjoying the outdoors
- Promote socialization between campers and teach important communication skills
- Remove the divide between “the haves, and the have-nots” in each cabin
- Reduce the stress associated with the damage to and theft of electronics
- Give campers a much needed break from the world of technology
- Allow campers to fully embrace the connections they make with other campers
- Assure that our campers are not exposed to age inappropriate material

After spending time trying to define what electronics devices were and were not affected by this type of change, we are happy to specifically clarify how this is defined at Camp Interlaken.

iPod/MP3 Players

No music players with interactive screens, or that play movies or television shows, will be allowed. This includes, but is not limited to iPod Nano, iPod Touch, iPod Classic, iPhone, etc. As we recognize that campers like to have their music with them and like to be able to identify and find their songs, we recommend bringing an [iPod Shuffle](#), a [Sansa Clip](#), or a personal CD player for music.

Digital Cameras

We encourage campers to bring a digital camera to capture their own memories.

Tablets, Netbooks, DVD Players, Laptops, or personal game systems

Leave them at home. If your child is flying to/from camp and they travel with a game system, it will be kept in the office safe when they arrive at camp and returned at the end of the session.

Cell Phones and Smart Watches

Campers are not permitted to have a cell phone or smartwatch while at camp. If your child is flying to/from camp and they travel with a phone or smartwatch, it will be kept in the office safe when they arrive at camp and returned at the end of the session. We will charge the phone or smartwatch if you send a charger to camp to be kept in the safe as well.

eReaders

Please do not bring Kindles or Nooks or other eReaders. Campers can bring books, and we also have a large variety of books in our *sifria*, library.

We view the opportunity to disconnect as a gift for your children while at camp. Thank you for supporting this effort to simplify the camp experience and to encourage building additional interpersonal skills. Your support of everything we do at Camp Interlaken is appreciated. Please contact Toni with questions at tdavison@jccmilwaukee.org or 414-967-8223.



SUGGESTED PACKING LIST FOR 2 & 4 WEEK SESSIONS

CLOTHING

- 12-14 T-Shirts
- 10-15 Fabric 2-Layer Masks (marked with name)
- 2-3 Long Sleeve Shirts
- 10 Shorts (gym or regular)
- 12 Underwear
- 12 Socks
- 4-6 Jeans/Pants
- 3-4 Sweatshirts/Sweaters
- 1 Bathrobe (optional)
- 4 Pajamas
- 2-4 Shabbat Appropriate Outfits*
(nice shirts, pants, skirts or dresses)
- Include 1 white outfit for our first Shabbat**
- 4 Swimming Suits — One Piece suits required for participation in water sports and preferred for other camp activities
- 1 Jacket or Fleece
- 2-3 Solid White T-Shirts for Tie-Dying/Decorating



SLEEPING GEAR

- 1 Pillow
- 2 Pillowcases
- 1 Sleeping Bag
- 2 Twin Sheet Sets **
- 2 Warm Blankets (one can be an open sleeping bag)

MISCELLANEOUS

- 2 Laundry Bags (**marked with name**)
- 1 Zippered Lingerie Bag to wash masks (**marked with name**)
- 1 Mask Lanyard
- 1 Flashlight w/batteries
- 1 Water bottle
- Stationary / Stamps / Pre-Addressed Envelopes
- Postcards / Pens / Pencils

RAIN GEAR

- 1 Pair of Rain Shoes/Boots (optional)
- 1 Raincoat or Poncho

SHOES

- 2 Pairs of Athletic Shoes
- 1 Pair of Flip-Flops/Shower Shoes
- 1 Pair of Athletic Sandals
- 1 Pair of Shabbat Shoes (optional)

SUNDRY ITEMS

- 1 Toothbrush with Holder
- 1 Toothpaste
- 1 Bar of Soap with Case or Bodywash
- 1 Hairbrush/Comb
- Deodorant
- Shampoo/Conditioner
- Insect Repellent
- Sunscreen
- 1 Tote for Carrying Items to/from Washouse

TOWELS

- 3 Beach/Large Towels
- 2-3 Washcloths
- 3 Bath Towels

OPTIONAL ITEMS

Box of Disposable Masks | Kippot for Boys | Mouthwash | Spare glasses/contacts | Chapstick | Baseball glove | Tennis Racquet | Swim goggles | Sunglasses | Hat/Visor | Tissues | Calamine/After Bite | Battery Operated Fan | Costumes | Apparel for July 4th, etc. | Bandana | A shirt for each Maccabiah Team (red and blue) | Bath Mat/Rug for Bedside | Bunk Bed Organizer (click for examples [here](#) or [here](#) or [here](#).)

Please do not send items of value unless you are willing to take responsibility for them. These items include ipods, cameras, watches, jewelry, etc. **CAMP INTERLAKEN IS NOT RESPONSIBLE FOR THE LOSS OR DAMAGE OF PERSONAL ITEMS.**

*We are trying to create a festive atmosphere for Friday Night Shabbat. Appropriate clothes will help set the tone. Saturday morning is more casual. The first Shabbat of the session will be our "White Shabbat". Campers should wear a white top/shirt or dress.

**The camper beds are not as wide as a twin bed. The mattress dimensions are 30x75. Sheets may be difficult to find, and twin sheets will work just fine.

CAMP LIFE

Cabin Life

Each camper is assigned to a cabin according to his/her age and/or grade in school in September. We make every effort to place your child in a cabin group that will ensure his/her having a positive group experience. We try to achieve a balance of new and returning campers in each cabin. Whenever possible, we will place a child in the same cabin with one friend of the same grade. A space has been provided for you to inform us of campers that your child wants to bunk with on the “Letter to My Counselor” form on CampMinder’s online database. We guarantee mutual requests. Please let us know any additional information in writing either on the forms provided or in a separate space online.

Canteen

Campers visit the canteen 2-3 times per week. A canteen credit of \$60 is available to four-week campers, \$30 for two-week campers and Ozrim and \$120 for eight-week campers. This amount is included in the camp fee. A variety of items such as sweatshirts, T-shirts, shorts, postcards, sundries, and other incidentals are available. A limited amount of candy and snacks will also be sold in canteen. If you wish, you may deposit additional money in your child’s canteen account by logging into your camp account in CampMinder. Any charges above the credit amount need prior approval by parents. Any remaining canteen balance is donated to the camp scholarship fund for the following year.



An Experience in “Living Judaism”

Living as part of a Jewish *Kehillah* (community) is one element that makes Camp Interlaken special. The rules and daily routines of camp life are based on Jewish values and practices. Programs are designed to be both fun and educational. From “Hebrew Word of the Day” to experiential and interactive programs concerning Jewish history and Israel, campers learn about Jewish heritage through “hands-on” activities that help them develop a positive Jewish identity.

Counselors are hired not only for their skills and personalities, but also for their ability to be good Jewish role models. Using the Hebrew language, saying *motzi* and *birkat hamazon* before and after meals, celebrating Shabbat, getting to know Israel through the eyes of our Israeli *schlichim* — all these, and more, contribute to a camper’s total Jewish experience at Camp Interlaken JCC.

Communal Living

Camp is a communal living experience. The success of this system is dependent on the cooperation and involvement of all of the participants. Every effort is made to establish a positive atmosphere and to motivate constructive behavior. Children will be sent home from camp if they behave in a way that is detrimental to the camp community. Acceptable and non-acceptable behavior is outlined in the Camper Code of Conduct. Acting as a responsible member of the camp community is necessary for the well-being of all. Campers are expected to contribute to the overall cleanliness and physical care of the camp. For example, they will participate in camp-wide *nikayon* (clean-up).



Camp requires children to be responsible for their belongings, the cleanliness of both their person and their personal space, and to be responsible for their actions. Camp helps children develop a greater sense of independence and competence.

There are no parents at camp! Your child will learn to solve problems by working with his or her cabin group and counseling staff. Of course, there are many responsible, older adults in camp. But camp is an opportunity for children to learn to use their own resourcefulness and to problem-solve independently in a supportive and safe environment.



FOOD PHILOSOPHY

Through a partnership with WOLFoods, Camp Interlaken JCC always provides kosher, nutritious and well-balanced meals. The Interlaken team partners with WOLFoods's team and nutritionist to create Camp's summer menus. WOLFoods's team of chefs spend their summers living on site at Camp Interlaken.



Our Kosher kitchens consist of a separate meat kitchen, dairy kitchen and a pareve bakery. Each item that we serve at camp must have an appropriately recognized kosher hechsher (symbol or special marking found on the packages of products that have been certified as kosher). At camp we eat three meals a day family style to promote conversation and community within the cabin groups. Occasionally, we may have a buffet meal if that fits in with the camp program. We serve most meals in the Chadar Ochel, our dining room. We eat lakeside on our lawn for a picnic lunch while the dining hall is being prepared for Shabbat on Friday afternoon. Once a week we have cookouts throughout all of camp where campers enjoy freshly barbequed hamburgers and hot dogs.

Healthy choices are available for all appetites, from our youngest campers to our adult staff. We have fresh fruit available at every meal, a salad bar, vegetarian, vegan, and gluten free alternatives. Special diets are monitored by our Food Service Manager, who takes care of these personal needs.

We are extremely diligent and supportive when it comes to caring for campers with special dietary needs, particularly those with food allergies, sensitivities, and/or intolerances. Importantly, we maintain a Peanut/Nut Free policy throughout our whole camp. Soy is the most common peanut substitute, and we do serve soy nut butter at lunch and dinner as a protein alternative. No peanut or tree nut products are permitted to be brought into camp or provided during the summer.

Other food allergies and food related health issues are readily dealt with on an individual case basis including gluten sensitivity and lactose intolerance. Camp Interlaken regularly stocks rice milk, soy milk and will stock lactaid milk as needed. Lactaid tablets can also be given at meals and snack time. Campers that are gluten free can expect meals that mirror the camp menu while their meals may also be supplemented with Udi's or a similar brand's items. Gluten free bread, pasta, pancake mix, and prepackaged treats are stocked in our kitchen. The food service manager assures that there will not be any cross contamination.

Epi Pens, in addition to being available in the Health Center, are kept in our dining room and other areas around camp. Epi Pen training is also conducted as a part of the First Aid training with all of our staff.

In addition to the more serious food sensitivity diets, we also support special needs like vegetarian or vegan campers. While "picky" eaters present challenges for most food service operations with a somewhat fixed menu, we do provide alternatives at each meal and address specific camper needs at the beginning of the summer. A full salad bar is available at lunch at dinner which includes a variety of vegetables, tuna, fruit, pasta salad, etc. Soy Nut Butter is available at lunch and dinner as well as homemade soup. Campers are encouraged to let their counselor know if they cannot find anything sufficient to eat at a meal, and the counselors will help connect them with the Food Service Manager to find an alternative.

All families will fill out the "Camper Diet" section on their New or Returning Camper Info Form to inform camp if their child(ren) have any special food needs so that camp can be prepared to best accommodate your camper. We ask that parents do not send any food to camp. Please contact the camp office prior to camp if you have additional concerns or want to share any additional information with us. Once the FBA team arrives at camp, the Food Service Manager will be available to talk with parents as needed.

*For information on how meals will be served in 2021, please refer to the [Covid-19 Playbook](#).



Find us on
Facebook



Follow us on
Instagram

16



FIND US ON
TikTok



YouTube
LIKE AND SUBSCRIBE



COMMUNICATION

Incoming Mail

Please write your child often! It means so much to campers to hear from home frequently. Especially for first time campers, send mail before they even leave for camp so it's waiting for them. Mail is distributed every day at camp except Shabbat. Letters detailing how much you miss your child or what a good time you are having in his or her absence are not helpful. If you have bad or upsetting news that needs to be conveyed to your child, please call the camp office and consult with the camp staff. Letters from home should only be positive in tone.

Please send mail to your child at:

Your Child's Name
Camp Interlaken JCC, Cabin Name OR Grade (if you don't know it, don't worry – we do!)
7050 Old Highway 70
Eagle River, WI 54521

Packages

In 2019 we decided to make a significant change to our existing package policy after a long and thoughtful examination of our policies, discussion with our team and Camp Committee, surveying a handful of camp parents, and collecting policies from other summer camp directors.

Camp Interlaken does not accept packages in boxes for campers. This does not apply to luggage being shipped to Camp prior to arrival. Please review the policy and share it with your campers and other family/friends (including grandparents) to help manage their expectations. In your camp forms on Camp in Touch, you will sign the package policy to show that you have read it.

The Policy

- Camp Interlaken will accept flat parcels that are in an envelope that is no larger than 12" x 15" x 3/4". These can include magazines, books, pens and paper- anything flat.
- Boxes will be returned to sender.
- Packages from visitors will not be accepted.

Birthdays at Camp

- One birthday package without food will be permitted.
- Label the package: "Birthday Package" so that we can make sure it gets to your child on their birthday.

Forgotten Items

- Call camp to talk to your child's unit leader if they've forgotten or lost a necessary item.
- If the item is not something that Camp can provide for your child, you will be asked to send the item to the Unit Leader's attention with your camper's name on it also.
- Send only the discussed items.

Our Reasons for the Change

- The sheer volume of packages has grown exponentially in recent years. This has become a strain on our staff to manage and has negatively impacted our camp environment.
- Receiving packages at camp creates a feeling of "haves and have-nots" undermining our efforts to create an inclusive community. Some campers do not receive any packages during the session which leaves them feeling sad and jealous. Others receive so many packages that they struggle to store and transport the contents.
- Our staff have been spending countless hours each day opening our camper packages to find that they often include prohibited items, like food. Campers are then disappointed that their packages are never delivered to them.
- Parents have expressed anxiety to us over pressure to send their campers packages because they are told "everyone else is getting them."
- Packages and packing material produce an incredible amount of waste that we would like to avoid.

What can you do instead?

Above all else, your child wants to hear from you. Write letters and send emails through CampMinder. There are cute apps like Touchnote that allow you to send postcards that you can create on your phone. If you believe your child will be saddened by this policy, wrap a few cute items and hide them in their luggage with notes about when to open them. A future hoda'ah will give you more specific information about how to send letters and how to use the CampMinder system to send electronic CampStamp notes.



Find us on
Facebook



Follow us on
Instagram



FIND US ON
TikTok

YouTube
LIKE AND SUBSCRIBE



COMMUNICATION CONTINUED

Outgoing Mail

Please keep in mind that at camp, the old saying, “No news is good news” holds true. We will do our best to see that your child writes regularly. Campers are required to send a letter (or postcard) twice a week. Many parents find it helpful to send along pre-addressed (and stamped) envelopes or postcards with their child (even for the older campers). Please keep in mind that mail takes several days to travel from Eagle River to your home. If you do not hear from your child or have other concerns, please feel free to contact camp.

Talking to Your Campers

Campers are not allowed to use the telephone while at camp. The only exception is receiving a pre-arranged birthday call from their parents. We have found that phone calls do not help children who are adjusting to the daily life at camp. If you require information or wish to relay an important message to your child, please call the camp office and speak with the camp staff.

Obtaining More Information about My Child during Camp

Many times parents become concerned about not getting enough information in their child’s letters about how camp is going. Some parents have found success through using pre-printed cards on which campers check off answers to multiple choice questions about camp. Also, in your letters to your child, ask specific questions for them to answer when writing back. If you don’t receive a letter from your child within a week of their arrival, you can call camp and ask to speak with the Unit Leader of your child’s age group or one of the Camp Directors who will check on your child and get back to you. Our newsletters are a great source of information! They are available on our website <http://www.campinterlaken.org> through CampMinder and offer great information about what is going on in your child’s unit at camp. From news about special programs to photos, you will have a glimpse into your child’s life at camp.

Camp Communication with Parents

“No news is good news” as the expression goes, but we all know that parents are anxious to find out how their children are doing at camp. We provide weekly updates from Camp through the CampMinder section of our website from our Camp Director and Unit Leaders. Pictures from camp will be posted in the CampMinder photo gallery. If you have any concerns about your child, you should contact Camp before, during, or after your child’s stay at camp. Parents are often an excellent resource for identifying and solving problems that children are having at camp. If your child is experiencing or causing any unusual difficulties at camp, you will hear from the Camp Director, unit leader, or Social Worker by telephone. It is essential that we know your whereabouts at all times that your child is in camp.

Cell Phones

If your child is arriving by plane, they may bring a cell phone for travel and turn it in to the camp office when they arrive at camp. All other campers are not allowed to bring or use cell phones while at camp. **Please do not send a cell phone with your child.** If a camper is found to have a cell phone, it will be confiscated immediately and sent to you cash on delivery. Any cell phones that are stored in the safe will be returned to your child as they exit the bus upon arrival at home or at the airport. Please refer to our technology policy.

Birthday Celebrations

Every camper celebrating a birthday while at camp receives a cake that is shared with their entire cabin. No one is forgotten. Please do not send special birthday food. Presents are, of course, optional. Presents to be shared with the entire cabin are recommended. You may telephone your child on his or her birthday. Birthday calls will be scheduled with parents in advance with your child’s unit leader.



Find us on
Facebook



Follow us on
Instagram

18



FIND US ON
TikTok



YouTube
LIKE AND SUBSCRIBE

COMMUNICATION CONTINUED

CampStamps One-Way Email

From our website at www.campinterlaken.org, we are pleased to offer web services that include e-mail capabilities, camp newsletters, and a photo gallery from our technology partner, CampMinder. These features are password protected so that only Interlaken families may view them. You will be able to send e-mails to your child and enjoy all of CampMinder's other features. Parents will receive 2 Camp Stamp credits for every week of camp that their campers attend (i.e. 2-week parents get 4 Camp Stamp e-mails, 4-week parents get 8 e-mails). This is included in your camp fee. You can purchase more CampStamps. Here are instructions for how to use CampMinder's Online System:

Visit www.campinterlaken.org. Click [Login To Your Camp Account](#). This will prompt you to enter your email address and password. This process is designed to be safe and secure by limiting access of "our" children's pictures online and your credit card information. If you cannot remember your password please, click the link to "Retrieve/Set Password".

Online Community: Once you are logged in, you will see our Online Community section where you can view and purchase photos, send your child one-way emails, read newsletters, and create guest accounts.

Photos: The Photo pages allow you to mark favorites, view, buy and share photos, as well as view slideshows. *Click the icons* below each photo to perform these actions. All of the photos you view online are available for purchase as prints, digital downloads, or gift items such as t-shirts, calendars, or mouse pads.

Emails: When you click on the email link, the system will guide you through the process of purchasing "CampStamps" to send emails to your child as often as you'd like throughout the session. Each email sent will use a certain number of CampStamps based on the selections you make. Standard emails without add-ons (e.g. Stationary, Smart Words & Sudoku) use 1 CampStamp. Upon purchasing CampStamps you will also be able to gift them to your guests; however they will be able to purchase their own upon logging in.

Guest Accounts: By clicking the "Guest Accounts" icon you will be able to create accounts for family members and friends to view photos and send emails. If you'd like your guest to be able to email your child make sure to check the appropriate boxes (these will be evident upon entering the guest's information). After creating each account your guest will receive an email similar to the one you received when first creating a password and security questions. They will be guided through the same process in order to log in securely.

NOTE: You do not need to create guest accounts for parents/guardians of the child as that information is already stored in our system. If you're unsure whether we have the correct information on file, please contact Nicole at: nhanlon@jccmilwaukee.org.

If you need help with anything regarding your online account, click on the **HELP LINK** at the top right of the screen and browse the FAQs. If none of these answer your questions, click on the **HELP TICKETS LINK** and create a help ticket for online camp applications, photos, email, etc. These help tickets will be sent directly to our technology partner CampMinder and will be answered as quickly as possible.



Parent Extended Travel during Camp

If you expect to be away from home during your child's stay at camp, please complete the vacation section in your campers' New/Returning Camper Information Form that is included in your online forms dashboard. If you decide to go on vacation after your child has left for camp, or if you need to report any changes on your vacation form, please call the camp office in Eagle River at (715) 479-8030. Should an emergency arise, we will need an address and phone number where you can be reached, plus the name and phone number of an emergency contact we can call if we cannot reach you.

Transportation

If you are unable or choose not to pick your child/ozo up from camp, you must submit written permission to the director for someone else to pick up your child/ozo. You must specify the person that will be picking up your child/ozo as well as the date, location and other pertinent details.

Necessity of Medical Exam

The American Camp Association requires that all campers must be examined by a physician prior to attending camp. **However, if your child has had a medical exam within the past 24 months, a complete physical is not needed, but your doctor will still need to complete the appropriate information (i.e. dates of immunizations) and both you and your doctor MUST sign the form.** The Medical Examination form requires a doctor's signature. Accuracy and completeness are essential for the health and safety of your child, as well as for others in camp. You must return the form to your CampMinder account or to the camp office in Milwaukee by May 1st, or 10 days after registration if you sign up after May 1st. In order to properly prepare for the care and well-being of our campers, our medical staff must have time to review each camper's health record. It is imperative that we receive health forms from every camper. No camper will be allowed in camp before their completed health form has been reviewed by our medical staff. *****It is not acceptable to send medical forms on the bus.*****

Camp Interlaken requires campers and staff to be vaccinated according to the American Academy of Pediatrics (AAP) and the Center for Disease Control (CDC). Please click here to view the immunization policy in full: <https://campinterlaken.org/immunization-policy/>

Because we want to ensure a positive experience for each camper, we ask you to document any information regarding current treatment of your child by a psychologist, psychiatrist or case worker on the parent questionnaire. The information should also be included in the online medical form. This information will be handled confidentially and shared only on a "need to know" basis.

What are the camp health and safety regulations?

We comply with all State Sanitary Codes and Vilas County Department of Health regulations governing a children's camp. In addition, Camp Interlaken is fully accredited by the American Camp Association. Fire Exiting Safety Plans for buildings are on file with the county, and fire and storm drills are held at least once per session. All waterfront staff hold American Red Cross Water Safety Instructor and/or Life Guard Training and Lifesaving Certifications. Most other camp staff also hold American Red Cross CPR and First Aid certifications. In compliance with American Camp Association guidelines, Camp Interlaken also has a safety manual detailing safety procedures for program areas.





BUS DEPARTURE – MILWAUKEE

THIS APPLIES TO ALL CAMPERS DEPARTING BY BUS FROM MILWAUKEE

What should my camper have with him/her on the bus?

Your camper should have a NUT-FREE meal (including a drink), labeled with their name. Campers may want to bring cards, music and other games for the bus ride. We will be showing movies on the bus as well.

Things to remember prior to the day of departure:

- On the bus, your camper will need a nut-free **bag lunch/dinner** including snacks, and **drinks** (no glass bottles).
- Any **medication** that your camper needs to take at lunch/dinner should be labeled in zip lock bags and turned in to staff at the medical table. Medications needed during the meal on the bus will be given to the bus counselors who will then give it to your camper when needed. Medications during meals at Camp will be distributed by our health center personnel.
- Leave cell phones and all devices that can access the internet at home.
- Make sure your camper's bags are labeled with their name!

Things to remember on the day of departure:

- Upon arrival at the bus stop, campers and parents/guardians should stay inside their vehicles.
- From outside your vehicle, a staff member will follow our covid screening procedures and check-in your camper.
- All luggage should be placed in the trunk of each camper's vehicle. Interlaken staff members will remove luggage from vehicles and load it onto the bus. Make sure that your camper's bags are clearly labeled with their name.
- Not using CampMeds is not an option. Unless Camp has given you permission, **medications will not be accepted at bus departure.**
- We ask that parents/guardians say goodbye to their camper from inside their vehicle.
- For health and safety reasons, please say goodbye to family pets at home.
- Leave all cell phones and devices that can access the internet at home.

More questions?

Contact Nicole Hanlon.

Email: nhanlon@jccmilwaukee.org

Call: 414-967-8240 up until May 31st

Call: 715-479-8030 after June 1st

Tentative Bus Departure Schedule

Bus departures are tentative at this time.

Families will receive their exact bus check-in and departure times in an email at least 1 week prior to bus departure day.

Groups are based on the grade your camper will be in Fall 2021.

Session 1 – Tuesday, June 22		
Grade	Check-in	Departure
3, 4, 5 grade mini boys	11:00 am	11:45 am
3, 4, 5 grade mini girls	11:00 am	11:45 am
3, 4, 5 grade girls	11:00 am	11:45 am
3, 4, 5 grade boys	11:00 am	11:45 am
6 th grade boys	11:00 am	11:45 am
6 th grade girls	12:00 pm	12:45 pm
7 th grade boys	12:00 pm	12:45 pm
7 th grade girls	12:00 pm	12:45 pm
8 th grade boys	1:00 pm	1:45 pm
8 th grade girls	1:00 pm	1:45 pm
9 th grade boys	1:00 pm	1:45 pm
9 th grade girls	1:00 pm	1:45 pm
10 th grade K'far	2:00 pm	2:45 pm

Session 2 – Wednesday, July 21		
Grade	Check-in	Departure
3, 4, 5 grade mini boys	10:00 am	10:45 am
3, 4, 5 grade mini girls	10:00 am	10:45 am
3, 4, 5 grade boys	10:00 am	10:45 am
3, 4, 5 grade girls	10:00 am	10:45 am
6 th grade boys	11:00 am	11:45 am
6 th grade girls	11:00 am	11:45 am
7 th grade boys	11:00 am	11:45 am
7 th grade girls	11:00 am	11:45 am
8 th grade boys	12:00 pm	12:45 pm
8 th grade girls	12:00 pm	12:45 pm
9 th grade boys	12:00 pm	12:45 pm
9 th grade girls	12:00 pm	12:45 pm
10 th grade K'far	1:00 pm	1:45 pm
11 th grade Gesher	1:00 pm	1:45 pm



Find us on
Facebook



Follow us on
Instagram



FIND US ON
TikTok



LIKE AND SUBSCRIBE



BUS RETURN FAQs

Bus return information is tentative at this time. Families will receive their exact bus information in an email closer to bus return dates.

How will I know what time the buses will arrive?

You will receive a bus confirmation with more accurate timing via email a few days prior to the return. Bus drivers are instructed NOT to arrive before the time given in the email confirmations. Please do not call the JCC. It is safe to assume that your camper's bus is running on time unless you hear otherwise. In the event of a significant delay (more than 30 minutes), you will be contacted by phone, email or both.

What if I cannot be there at that time? Can someone else pick up my child?

If your transportation plans change from those that you submitted through your CampMinder account, you must notify Nicole in the camp office. If someone other than a parent or guardian will pick your child up at the end of their session, you must submit **written permission** to the office. You must provide contact information for the person that will pick up your child.

Please leave your pets at home.

BUS RETURN INFORMATION: ALL 2-WEEK CAMPERS

MINI SESSION BUSES RETURN TO MILWAUKEE ONLY.

MINI SESSION BUSES WILL NOT DROP-OFF IN MADISON, CHICAGO, GREEN BAY, OR MINNEAPOLIS.

Mini Session 1: Ends Tuesday, July 6th

Campers will **return** to:

Milwaukee: 1:30-2:30pm
Nicolet High School
 6701 N. Jean Nicolet Rd,
 Glendale, WI, 53217

Mini Session 2: Ends Wednesday, August 4th

Campers will **return** to:

Milwaukee: 1:30-2:30pm
Nicolet High School
 6701 N. Jean Nicolet Rd,
 Glendale, WI, 53217

BUS RETURN INFORMATION FOR 4-WEEK SESSIONS: MILWAUKEE

Session 1: Ends Sunday, July 18th
Session 2: Ends Monday, August 16th

Approximate return time: 1:30-2:30pm

Campers will **return** to:
Nicolet High School
 6701 N. Jean Nicolet Rd,
 Glendale, WI, 53217

BUS RETURN INFORMATION FOR 4-WEEK SESSIONS: CHICAGO, MADISON, GREEN BAY

Chicago, IL
Session 1: Sun. July 18th
Session 2: Mon. Aug. 16th

Pick up: 2:00-3:00pm
Toys 'R Us
 1610 Deerfield Rd
 Highland Park, IL, 60035

Madison, WI
Session 1: Sun. July 18th
Session 2: NO BUS

Pick up: 12:45-1:45pm
Jewish Federation of Madison
 6434 Enterprise Ln
 Madison, WI, 53719

Green Bay, WI
Session 1: NO BUS
Session 2: Mon. Aug. 16th

Pick up: 11:45am-12:45pm
Arby's/Shell Station
 3285 Cedar Hedge Road
 Green Bay, WI, 54311



Find us on Facebook



Follow us on Instagram



FIND US ON TikTok



LIKE AND SUBSCRIBE YouTube



INFORMATION FOR CAMPERS TRAVELING BY PLANE

Please contact the camp office for specific flight and chaperone information

Camp will pick up campers on June 22 and July 21 from MKE and RHI.

Camp will provide transportation HOME from camp to RHI and to these airports on these dates:

July 6 – MKE, RHI, & MSP | July 18 – MKE, RHI, & ORD | August 4 – MKE & RHI | August 17 – MKE & RHI

ARIZONA Campers Chaperoned Flight: For Session 1 Arizona campers, Camp Interlaken has arranged chaperoned travel to Rhinelander from Phoenix on TUESDAY, JUNE 22nd. On the last day of Session 1 (July 18), a coach bus will take all campers flying home from Milwaukee directly to the airport. A chaperoned flight has been arranged for the return to Phoenix as well. Parents of Arizona campers in first session will receive flight information by email.

FLORIDA Campers Chaperoned Flight: For Session 1 Florida campers, Camp Interlaken has arranged chaperoned travel to Milwaukee from Fort Lauderdale on TUESDAY, JUNE 22nd. On the last day of Session 1 (July 18), a coach bus will take all campers flying home to Florida to the airport. A chaperoned flight has been arranged for the return to Fort Lauderdale. Parents should have received flight information by email.

OTHERS Flying into Milwaukee: Parents can choose to have their camper fly in to Milwaukee (General Mitchell International Airport) the day camp begins (June 22nd for Session 1, July 21st for Session 2) and travel by coach bus from Milwaukee to Camp Interlaken. Contact the camp office with questions regarding coordinating flight arrival times with cabin group bus departure times.

Other Airport Options: Camp Interlaken is served by one airport close to camp: Rhinelander, WI (RHI), which is approximately 45 minutes from camp. Campers flying in to Rhinelander will be met by camp staff for the same cost as the bus fee. Staff will be wearing camp t-shirts and nametags and are easy for your child to recognize. We suggest that you make your camper's airline reservation earlier rather than later. This will guarantee the day and time you need. Planning early also allows for use of your frequent flyer miles. Please note: currently the only commercial airline to service Rhinelander is Delta Airlines through Minneapolis-St. Paul (MSP). Starting July 1, Rhinelander will also be serviced by United Airlines, offering direct flights from Chicago (ORD). *There are no direct flights from Milwaukee to Rhinelander.*

LUGGAGE: We request that you send all luggage directly to camp ahead of your camper's arrival time. FedEx, UPS or any other prepaid carrier can be contacted for this purpose. CAMP will arrange for your camper's luggage to be picked up from camp and returned to you on the last day of the session via FedEx. Shipping costs will be charged to your card on file. The camp address is: Camp Interlaken JCC, 7050 Old Highway 70, Eagle River, WI 54521. If you have any questions regarding travel arrangements, luggage, or housing for your camper, please call or email Nicole Hanlon in the camp office at nhanlon@jccmilwaukee.org or 414-967-8240 (prior to June) or 715-479-8030 (After June 1).

Returning from Camp: Transportation to the Milwaukee or Rhinelander airport for campers flying home after camp will be arranged by Camp. A Camp Interlaken staff member or volunteer will ensure that your camper gets checked into their flight. If flying home from Milwaukee, please try to make a return flight reservation after 5:00 p.m. on the last day of camp. If the buses are late due to heavy traffic, etc., we don't want to risk having your camper miss their flight home.

PARENT DROP-OFF AND PICK-UP AT CAMP

If interested, parents/guardians can elect to drop off their camper(s) at Camp and/or pick them up from Camp at the end of their session. For drop-off, please arrive at Camp between **11:00am and 2:00pm CST** on the first day of the camper's session. For pick-up, please arrive at Camp between **9:30am and 11:30am CST** on the last day of your camper's session. *Any transportation outside of those dates and times, including early pick-up, should be coordinated with Nicole in the Camp office at nhanlon@jccmilwaukee.org.*

This year, campers should not travel to Camp with individuals who are not members of their household. Exceptions can be made in the case of campers carpooling to camp with other campers who will be in their cabin/pod. A staff member will be at Camp's gate welcoming each camper and family into Camp and directing them towards our maintenance area where we will have a check-in station staffed by members of our health team. We ask that everyone remains inside their vehicle throughout the check-in process and only the camper exit the vehicle after they are checked in.

*For more information regarding drop-off/pick-up procedures for summer 2021, please refer to the [Covid-19 Playbook](#).



Find us on
Facebook



Follow us on
Instagram

23



FIND US ON
TikTok



LIKE AND SUBSCRIBE
YouTube

IMPORTANT TERMS AT CAMP INTERLAKEN

“Achshav”	“Now”	“Lilah Tov”	“Good night”
Aruchat Boker	Breakfast	Maccabiah	Olympics
Aruchat Tzoharayim	Lunch	Machaneh	Camp
Aruchat Erev	Dinner	Makom Ha Lev	Place of the heart (amphitheater)
Avodah	Work	Menucha	Rest hour
Bayit	House (in K’far Noar)	Mirpa’ah	Health Center
Beit Am	Art Building	Mirpesset	Porch
Birchat Hamazon	Blessing after meals	Moadon (Mo)	Clubhouse (for Ozrim)
“Boker Tov”	“Good morning”	Nikayon	Clean-up
Brachot	Blessings	Nosh	Snack
Canteen	Camp store	Omanut	Art
Chadar Ochel	Dining Hall	Ozrim	Helpers – Grade 12 (<i>AKA Ozos</i>)
Chofesh	Free time	Port of Eilat	Counselors-in-training
Chug	Activity	Rom Kol	Small crafts dock
Chugim	Activities	Rosh	Loudspeaker
“Eizeh Yofi”	“How lovely”	Ruach	Head (Leader)
Floval	Flag Oval (where we raise and lower the flag)	Sha’ar	Spirit
Hachshivu	Attention	Shavua Tov	Grades 8 & 9
“Hachshivu, Hachshivu-na, Kol Ha’Machaneh”	“Attention, attention, all of camp...”	Schmutz	Wishing a Good Week
Hamotzi	Prayer over bread before meals	“Shabbat Shalom”	Trash/dirt (Yiddish)
Hanafat Hadegel	Flag raising	Shin Shin	Shabbat greeting
Havdalah	Separation (marking the end of Shabbat and beginning of a new week)	Shlichim	Israeli emissary who spends a year in Milwaukee (culminates at Camp)
Hoda’ah	Message	Shmirah	Israeli emissaries (counselors)
Hoda’ot	Messages	Shoresh	Night Watch
Horadat Hadegel	Flag lowering	Shtick	Grades 3,4,5
Kavod	Respect	Sicha	A skit
K’far Noar	Teen Village (grade 10)	Sichot	Conversation
L’dor V’dor	From generation to generation	Siddur	Collective talks (discussion groups)
Lake Bragonier	Lake on the other side of camp	Sifria	Prayer book
Lake Finley	Main Camp Lake	Toranim	Library
Lashon Hara	Evil Tounge (gossip)	Tushball	Table setters
		Tzomayach	Roof Ball
		Ulam	Grades 6 & 7
		Yom Shmirat Haguf	Theater/Social Hall
			Day of caring for the body

